

LIQUID LEVEL GAGE - FRONT MOUNT WITH NEEDLE VALVES, PIPE ADAPTERS

LDI INDUSTRIES' series G608 closed circuit liquid level gages are furnished with shut-off valves between the tank wall and gage. The gage body can be removed from the valves without loss of fluid. Configured with pipe adapters. Bottom closure cap may be used as a drain. An exclusive construction feature provides a .06 (1.52mm) lateral adjustment at each mounting bolt to facilitate mounting. All metal parts are precision machined from solid bar stock with the sight opening recessed into the gage body for maximum protection. Aluminum valves are optional. **Please specify** when ordering.

STANDARD MATERIALS:

- Aluminum construction
- Brass valves
- Buna N seals
- Borosilicate glass with redline on white background for distinct level reading and maximum fluid compatibility

OPERATING CONDITIONS:

- Maximum working temperature with standard seals up to 250°F (121.1°C)
- Maximum working pressure as noted in table below at 150°F (65.6°C), no corrosion

**MODIFICATIONS AVAILABLE - MADE TO ORDER - CONSULT OUR FACTORY
(MINIMUM ORDER MAY BE REQUIRED)**

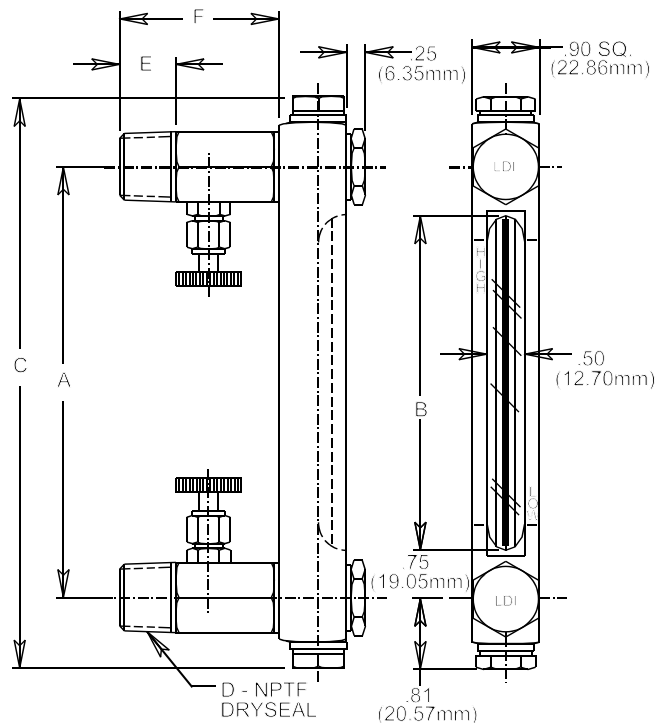
HOW TO ORDER:

WHEN ORDERING, SPECIFY THE FOLLOWING, AFTER THE SERIES NUMBER SEPARATING EACH WITH A DASH (-):

- A- Aluminum gage body (standard)
 - B- Brass gage body (optional)
 - 1- Buna N seals (standard)
 - 2- Butyl seals (optional)
 - 3- Viton A® seals (optional)
 - 4- Ethylene propylene seals (optional)
 - 5- Silicone seals (optional)
- SPECIFY PIPE THREAD SIZE:**
- 2- 1/4 male pipe thread
 - 3- 3/8 male pipe thread
 - 4- 1/2 male pipe thread
 - 5- 3/4 male pipe thread

EXAMPLE: G608-10-A-1-4 1/2 Pipe thread
 Buna N seals
 Aluminum gage body
 10.00 (254.00mm) Centers
 Series G608

G608 PATENTED



SERIES NUMBER	A - CENTER INCHES (mm)	B - SIGHT INCHES (mm)	C - LENGTH INCHES (mm)	MAX. WORK. PSI (kPa)	D	E INCHES (mm)	F INCHES (mm)
G608	10 (254.00)	8.50 (215.90)	11.62 (295.15)	275 (1896)	1/4-18	.56 (14.22)	2.06 (52.32)
	12 (304.80)	10.50 (266.70)	13.62 (345.95)	270 (1862)			
	15 (381.00)	13.50 (342.90)	16.62 (422.15)	260 (1793)	1/2-14	.75 (19.05)	2.25 (57.15)
	18 (457.20)	16.50 (419.10)	19.62 (498.35)	240 (1655)			
	24 (609.60)	22.50 (571.50)	25.62 (650.75)	210 (1448)	3/4-14		
	30 (762.00)	28.50 (723.90)	31.62 (803.15)	185 (1276)			

LDI Industries
 Lube Devices • Flodar • Hydra-Tool • Vescor
 1864 Nagle Ave. P. O. Box 1810
 Manitowoc, WI 54221-1810
 Phone: (920) 682-6877 Fax: (920) 684-7210
 E-MAIL: sales@ldi-industries.com WEBSITE: www.ldi-industries.com

LIQUID LEVEL GAGE - FRONT MOUNT WITH NEEDLE VALVES, PIPE ADAPTERS
 11/05 **BULLETIN F327-8**
ISO9001:2000 CERTIFIED