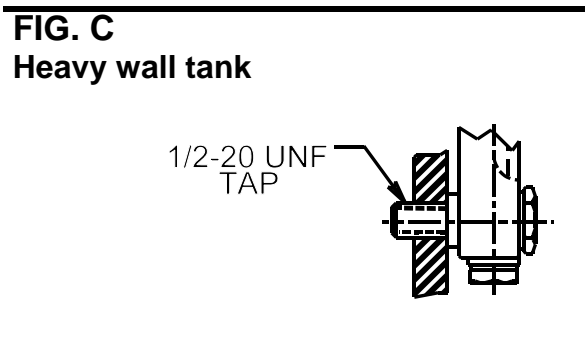
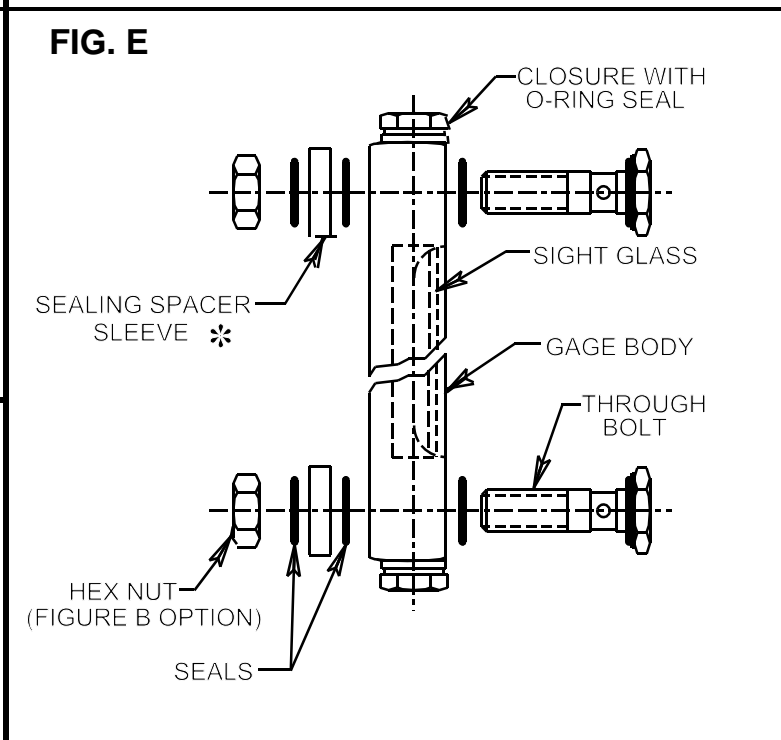
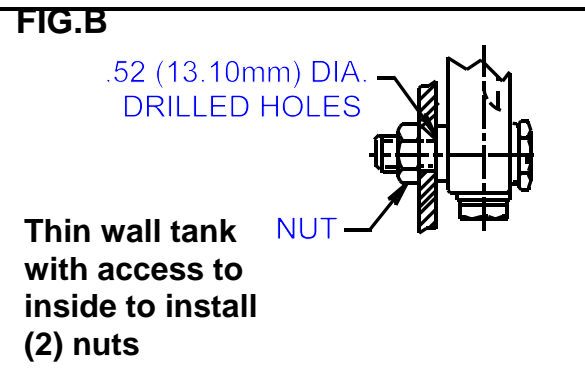
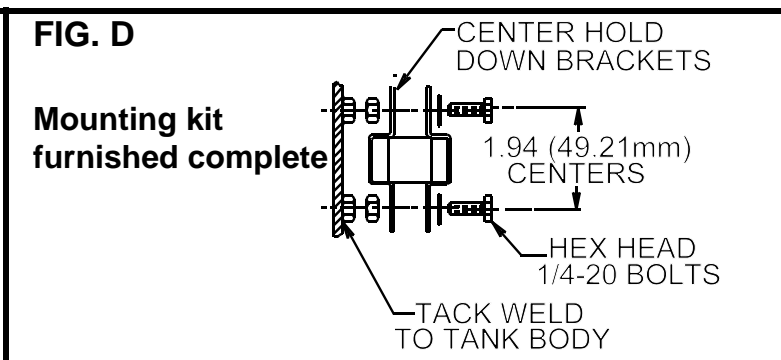
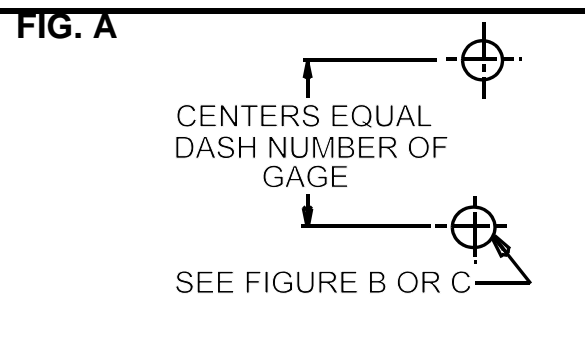


INSTALLATION INSTRUCTIONS: FRONT MOUNT GAGES

1. At the desired gage location: **FIG. A, B, C.**
 - A. Locate centers.
 - B. For thin wall tank, drill two .52 (13.10mm) dia. holes in tank wall corresponding to centers of gage.
- OR -
 - C. If preferred, where tank wall is heavy enough to tap:
Drill and tap two holes per your selected mounting bolt thread (ie. 1/2-20UNF, or M12x1.75, etc.) in tank wall corresponding to centers of gage.
2. Remove burrs from holes to provide good sealing surfaces. **FIG. A, B, C.**
3. Install gage to tank - make sure O-rings are set properly in recess provided, either in gage body or in sealing spacer sleeve, (outside of tank wall between gage and tank). **FIG. E**
4. Tighten through bolt with a socket wrench. Torque mounting bolt to 60 inch lbs (6.78N·m). It is not necessary to over compress seals to make a liquid tight seal. **FIG. E.**
5. Gages 3.00 through 12.00 (76.20mm through 304.80mm) centers inclusive have tank seals recessed into the gage body - Gages 13.00 through 72.00 (330.20mm through 1828.80mm) centers inclusive are furnished with sealing spacer sleeves.*. **FIG. E.**
6. For gages with centers of 48.00 (1219.20mm) or more, center mounting kit brackets are furnished. To install the center mounting kit bracket, tack weld two 1/4-20 full nuts to the tank wall as shown below. **FIG. D.**




LUBE DEVICES, INC.
 1864 NAGLE AVE., P.O. BOX 1810, MANITOWOC, WI 54221-1810
 PHONE: (920) 682-6877 FAX: (920) 684-7210
 E-MAIL: sales@lubedevices.com WEBSITE: www.lubedevices.com

INSTALLATION INSTRUCTIONS -
 FRONT MOUNT GAGES
BULLETIN F327-50
 5/04