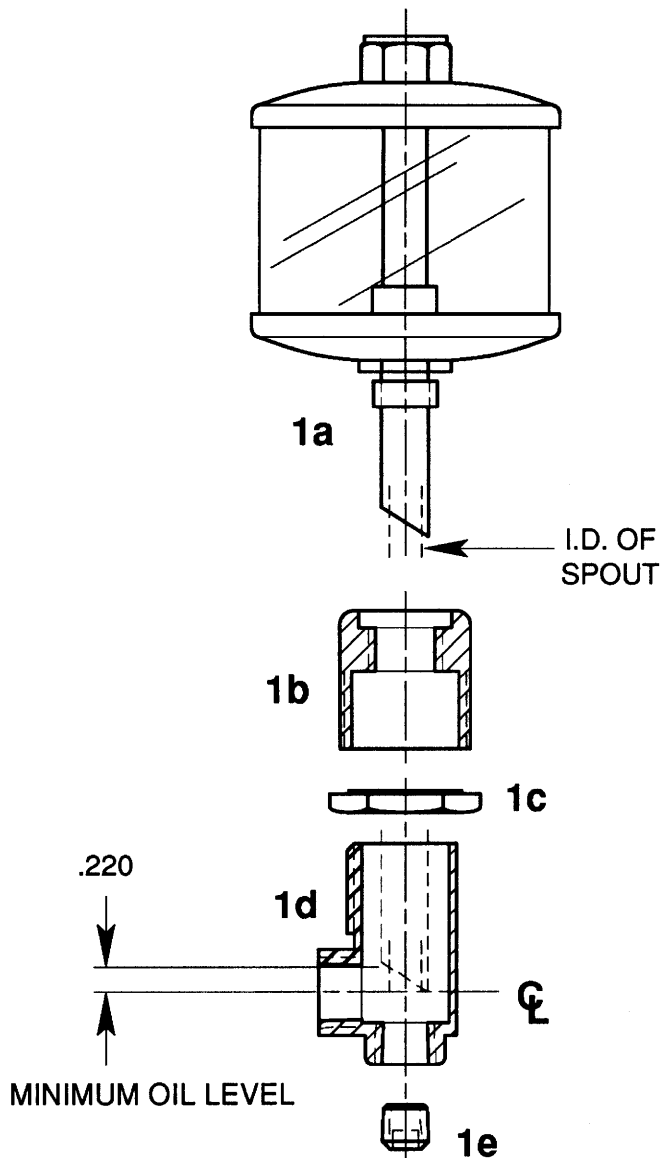


# INSTALLATION INSTRUCTIONS

## RCL100, 120, 130 AND 180 SERIES RESERVOIR, CONSTANT LEVEL - ADJUSTABLE, SIDE & BOTTOM OUTLET

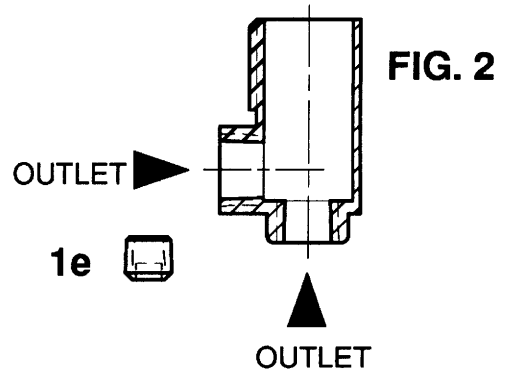
**STEP 1.** Disassemble reservoir as shown. You will have 5 separate parts:

- 1a. Reservoir bowl assembly.
- 1b. Adjustment body.
- 1c. Lock nut.
- 1d. Constant level chamber.
- 1e. Pipe plug (RCL130 AND 180 ONLY).



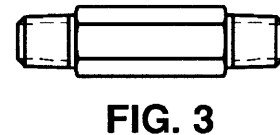
**STEP 2.** (RCL130 AND 180 ONLY)

Determine outlet side to be used. Tighten pipe plug into unused outlet (FIG. 2).



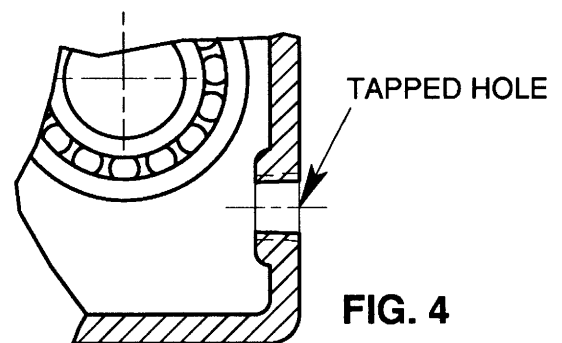
**STEP 3.**

Use a nipple for side outlet or combination of nipples and elbows for bottom outlet to achieve minimum oil level in bearing housing. I.D. of pipe must be deburred as well as pipe tap on bearing housing to remove all burrs, hanging particles, etc (FIG. 3).



**STEP 4.**

Make sure tapped hole in bearing housing (FIG. 4) is tapped square to face so that nipple will be in a horizontal plane. Top of tap drill should be equal to oil level to be maintained.



**LUBE DEVICES, INC.**

1864 NAGLE AVE., P.O. BOX 1810, MANITOWOC, WI 54221-1810  
PHONE: (920) 682-6877 FAX: (920) 684-7210  
E-MAIL: sales@lubedevices.com WEBSITE: www.lubedevices.com

RESERVOIR, CONSTANT LEVEL -  
.22 MIN. OIL LEVEL / ADJUSTABLE

3/99

**ENG. STD. 118.03a**

# INSTALLATION INSTRUCTIONS

## RCL100,120, 130 AND 180 SERIES RESERVOIR, CONSTANT LEVEL - ADJUSTABLE, SIDE & BOTTOM OUTLET

### STEP 5.

Use teflon filled pipe dope, not tape on threaded ends of nipple / pipe. Tape can break off into tiny shavings, thus contaminating bearing or shaft and will result in machine failure.

Tighten nipple into bearing housing (5a) using wrench or pliers to tighten.

Use open end wrench to tighten lower base (5b) onto nipple. Wipe excess pipe dope off threads.

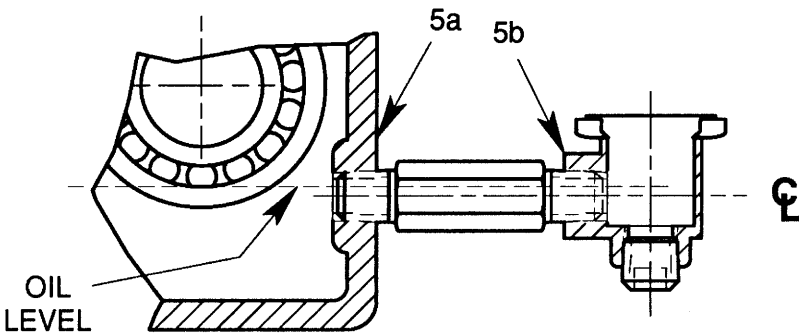


FIG. 5

### STEP 6.

Invert reservoir to fill through spout (FIG. 6). When full hold thumb over spout, invert over base and screw in finger tight. You may prefill, but final oil level must be established by spout on reservoir.

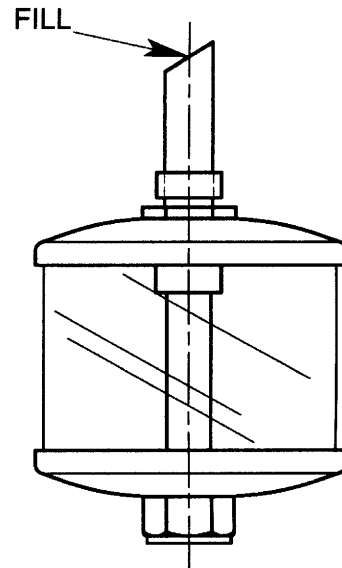


FIG. 6

### STEP 7.

Check all joints for leaks and determine that oil is up to desired level (FIG. 7). Units shipped with .22 minimum fill level. To raise the fill level, back off the adjustment body (1b) to the desired level, and turn the locknut (1c) to lock body in place.

.22 MIN. FILL LEVEL  
.72 MAX. FILL LEVEL

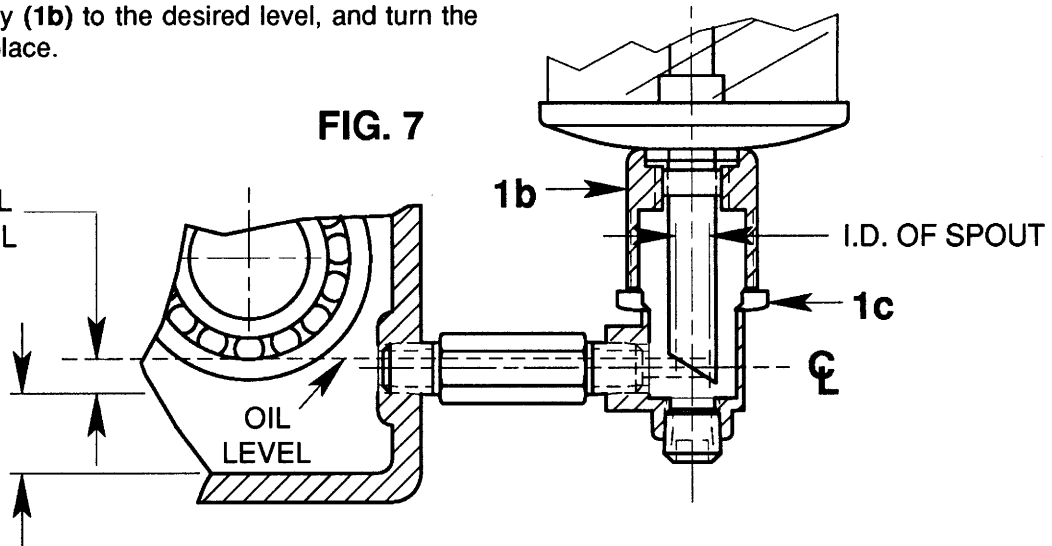


FIG. 7

PREFILL 2/3 TO 3/4 FULL

RESERVOIR, CONSTANT LEVEL -  
.22 MIN. OIL LEVEL / ADJUSTABLE

3/99

ENG. STD. 118.03a



**LUBE DEVICES, INC.**

1864 NAGLE AVE., P.O. BOX 1810, MANITOWOC, WI 54221-1810

PHONE: (920) 682-6877

FAX: (920) 684-7210

E-MAIL: sales@lubedevices.com WEBSITE: www.lubedevices.com