

LIQUID LEVEL GAGE - FRONT MOUNT 270° VIEWING

This series of liquid level gage was developed to meet the industries' need for a rugged leakproof, wide angle viewing fluid level gage. The G635 series gage is similar to our G605 series gage, with the exception of a wider viewing window and more massive, heavy duty construction. An exclusive sealing arrangement provides a .06 (1.52mm) adjustment at each mounting bolt. The sight window is deeply recessed for maximum protection. Gages are furnished complete including spacer sleeves, tank to gage O-ring seals and hex nuts for mounting. This front mounting series can be installed in threaded openings and does not require access to the reservoir interior.

STANDARD MATERIALS:

- Aluminum construction
- Buna N seals
- Borosilicate glass with redline on white background for distinct level reading and maximum fluid compatibility

OPERATING CONDITIONS:

- See ENG. STD. 109

**MODIFICATIONS AVAILABLE-MADE TO ORDER-CONSULT OUR FACTORY.
(MINIMUM ORDER MAY BE REQUIRED)**

G635 - PATENTED - 3 SIDES OPEN - 270° VIEWING

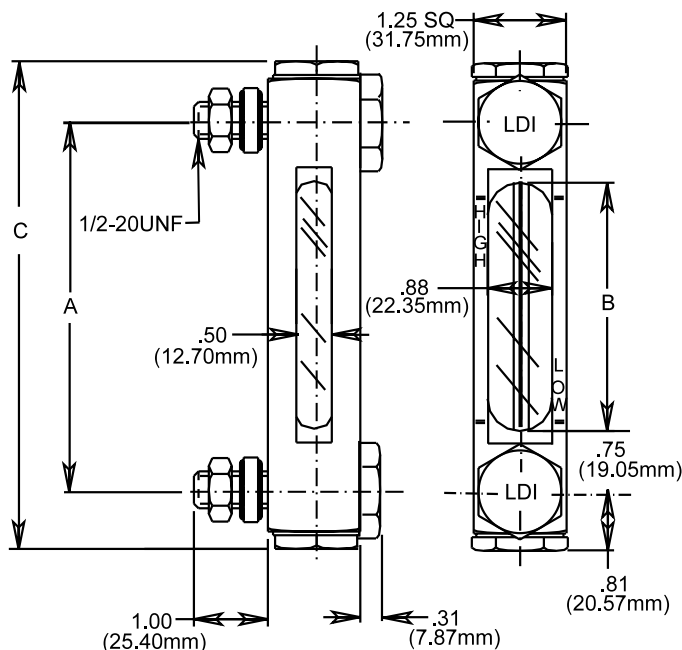
HOW TO ORDER:

When ordering, specify the following after the series number, separating each with a dash (-):

- A- Aluminum gage body (standard)
- B- Brass gage body (optional)

- 1- Buna N seals (standard)
- 2- Butyl seals (optional)
- 3- Viton A® seals (optional)
- 4- Ethylene propylene seals (optional)
- 5- Silicone seals (optional)

EXAMPLE: G635-05-A-1 – Buna N seals
 Aluminum gage body
 5.00 (127.00mm)
 mounting centers
 SERIES G635



SERIES NUMBER	A - CENTERS INCHES (mm)	B - SIGHT INCHES (mm)	C - LENGTH INCHES (mm)
G635	05 (127.00)	3.50 (88.90)	6.62 (168.15)

LDI Industries
 Lube Devices • Flodar • Hydra-Tool • Vescor
 1864 Nagle Ave. P. O. Box 1810
 Manitowoc, WI 54221-1810
 Phone: (920) 682-6877 Fax: (920) 684-7210
 E-MAIL: sales@ldi-industries.com WEBSITE: www.ldi-industries.com

LIQUID LEVEL GAGE -
 FRONT MOUNT 270° VIEWING
BULLETIN F327-35
 5/06
 ISO9001:2000 CERTIFIED